

SATOL Laundry Management System



What is Laundry System?

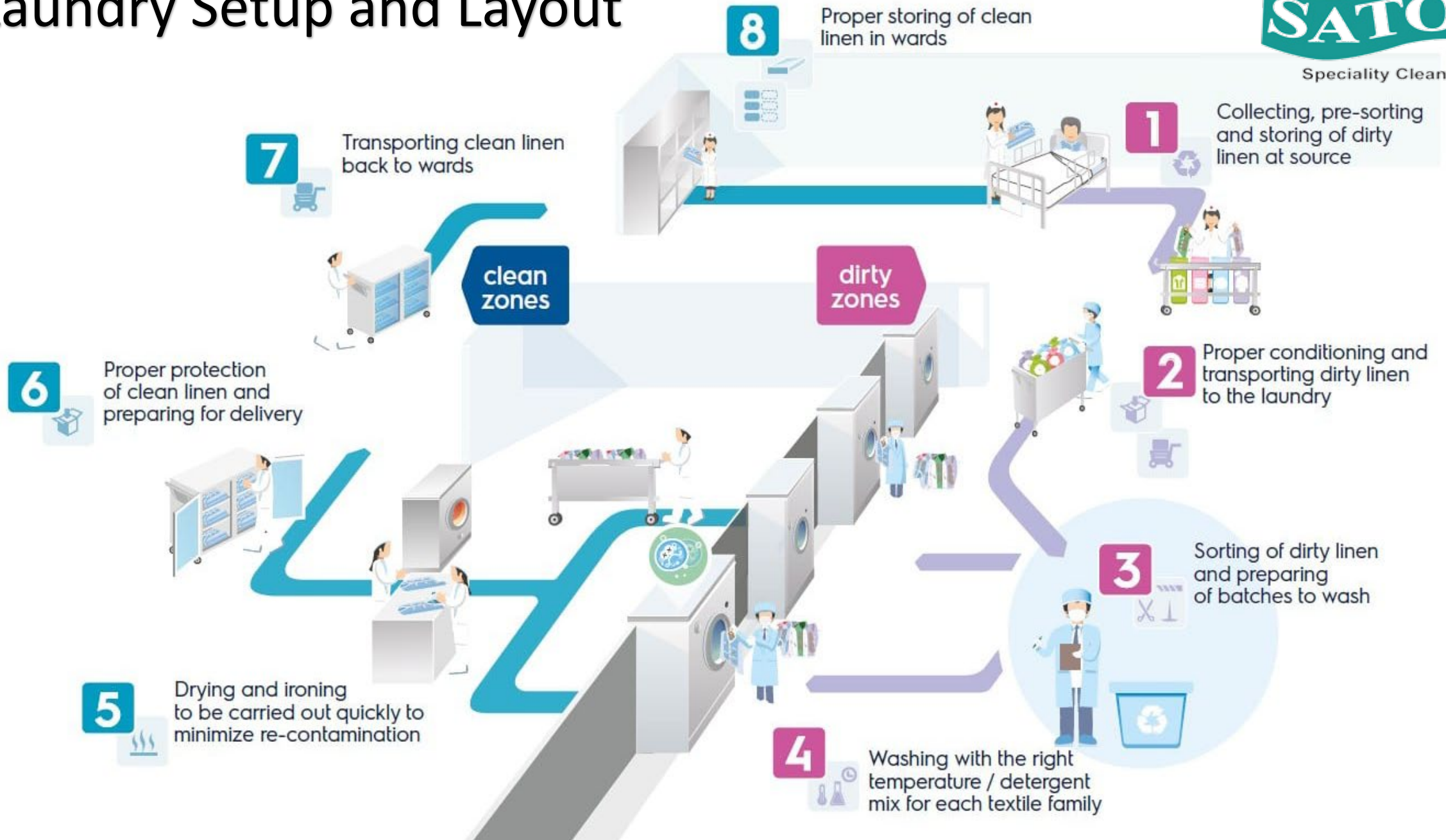
A commercial laundry system is **a combination of commercial washers, dryers, and other ancillary equipment.** Each part of the system works to clean and dry fabrics of larger quantities and higher frequencies than typical domestic machines.

Type of Commercial Laundry

- Contract Laundry
- Railway Laundry
- On premises Laundry – Hotels
- Laundromarts



Laundry Setup and Layout





Factors Affecting Laundry Cleaning

In Any Laundry Set up may it be OPL / Domestic or commercial grade contract laundry

WATCH factor is the key component of any Laundry cleaning



W - Water



A – Action



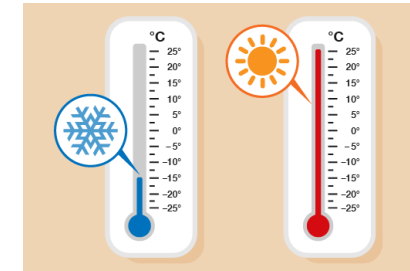
T - Time



C - Chemical



H - Heat



Perfect Example of WATCH Factor is Laundry Machine

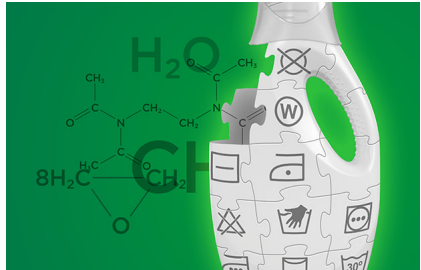
Factors For a Cleaning Process



Detergent
concentration



Contact
time



Detergent
composition



Mechanical
action



Washing
temperature



Type of Cloths / Fabric

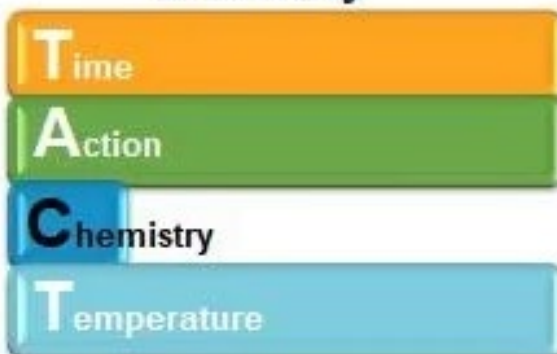
Cleaning Cycle – Sinner's Circle – TACT

EVERYTHING IS CLEANED BY USING THE
T.A.C.T VARIABLES

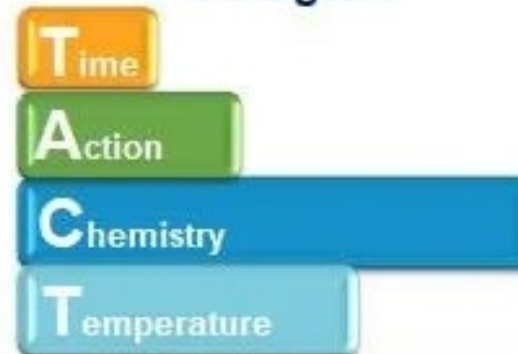


...which are **CO-DEPENDENT**

**Cleaning with wrong
Chemistry**



**Cleaning with the right
detergent**



Time

While something like time might sound like a simple optimization variable, it can be complicated based on the soil and its preparation. The contact time in which the cleaning agent is exposed to the soil is very important for efficient cleaning.

Action

Action is the type of cleaning method that will be chosen to be in contact with the soil, that is decided based upon the capabilities of the client.

Chemistry

Out of all four TACT variables, Chemistry is the first one we assess. Our aim is to allow the Chemistry of the detergent, rather than the Action of the cleaning process, to accomplish the majority of the cleaning.

Temperature

Temperature is a very important optimization factor in the cleaning process. We focus on the temperature of all cleaning steps and not just detergent steps. If temperature isn't optimized correctly in each step, there is the risk that soils will not be removed or that other cleaning issues will arise.

Things to check in commercial Laundry

- Water Condition
- Final Product condition in the stock room
- Check the Input Water TDS
- Check the Drain water in the final rinse.
- Check for the Temperature meter
- Check for the Boiler / Electrical heating system.



Things required for Testing in a Laundry



Reflectance Meter



Testing Kit



pH Meter



Litmus Paper

SATFAB 200S – Emulsifier Concentrate

SATFAB 200 S is a concentrated liquid surfactant booster based on a blend of surfactants.

SATFAB 200 S is an effective booster based on a blend of nonionic surfactants. This product shows excellent performance on fatty/oily soil. Fats and oils, once removed from the fabric, are further dispersed by SATFAB 200 S, thereby preventing redeposition.

USAGE INSTRUCTION

SATFAB 200 S is mainly used in conjunction with alkalinity boosters and/or main wash detergents. In combination with the latter its main function is to improve dispersion of fatty and oily soil, thus enhancing wash performance on heavily soiled goods such as cotton and polyester/cotton workwear and table linen.

BENEFITS

- Excellent performance on fatty and oily soil
- Good foam control properties optimal use of mechanical action in the washer extractor Machine.
- Suitable for use on pastel-colored fabrics.

FORMULATION

Fatty Alcohol Ethoxylate 50%-60%
Iso Propyl Alcohol 10%



SPECIFICATION:

Appearance : Light Yellow

Liquid

Specific Gravity : 0.97

pH Value :6.7 (in1%solution)

: 7.71 (in100%solution)

SATFAB Universal – Detergent Booster With Optical Brightener

SATFAB UNIVERSAL is intended for washing UNIVERSAL types of textiles, t for water-based wash. The product is especially suited for gentle and hygienic safe washing of cleaning fabrics, such as mops, and cleaning cloths of cotton and / or synthetic beers. The product is intended primarily for automatic dosing.

USAGE INSTRUCTION

SATFAB UNIVERSAL is compatible with other metering system that automatic universally provides exact and accurate dosage. Recommended dilution 2-5%

FORMULATION

Linear Alkyl Benzene Sodium Sulphonate (LABSA) 10%

Iso Propyl Alcohol (IPA) 10%

Fatty Alcohol Ethoxylate 5%

BENEFITS

- SATFAB UNIVERSAL contains non Ionic surfactants, with good fat emulsifying ability. Alkali enhances fat solubilisation and removes protein dirt.
- Phosphate aid water softening.

| SOILING | Soft Water | Medium Water | Hard Water |
|---------|------------|--------------|------------|
| | 0-6° | 7 - 13° | 14 - 20° |
| Light | 7 | 10 | 15 |
| Medium | 10 | 12 | 20 |
| Heavy | 12 | 15 | 25 |



SPECIFICATION:

Appearance : Light Yellow

Liquid

Specific Gravity : $1 \pm 0.2 \text{g/cm}^3$

pH Value : 3.0 ± 5 (in 1% solution)

: 1.5 ± 0.5 (in 100% solution)

SATFAB CID – NEUTRALISER

SATFAB CID is a laundry sour specially formulated for use in commercial and on-premise laundries. This product should be applied in the last rinse to neutralise residual alkali and to reduce of active chlorine.

- SATFAB CID is an alkali and chlorine 'neutralizer', based on bisulphites. These substances are mildly acidic and are applied to neutralize alkali present in rinse water and on fabric.
- Accidental overdosing of SATFAB CID will not lead to a too low pH, and consequently the risk off a fabric damage is minimal. An organic acids-based neutralizer should only be used in those cases where no chlorine bleach has been applied.
- SATFAB CID can be used for all types off fabric, except for clean room garments.

FORMULATIO

Sodium Metabisulphite 35%

USAGE INSTRUCTION

Dose into the final rinse (sour bath step) of the wash process to Neutralise residual alkali and ensure that correct pH of washed Goods (6.06.5) is achieved. For some other classic actions, other pH guidelines should be followed. In addition check if the drain water is free of residual chlorine.

BENEFITS:

- Effective neutralization of residual alkalinity in rinse water and on fabric.
- Neutralization of traces of chlorine bleach.
- Prevents yellowing off fabric.
- Prevents fabric damage.

SPECIFICATION:

| | |
|------------------|-------------------------|
| Appearance | : Light |
| Yellow Liquid | |
| Specific Gravity | : 0.97 |
| pH Value | : 6.7 (in1%solution) |
| | : 7.71 (in100%solution) |



SATFAB SOFTENER – Fabric Softener

Concentrate

SATFAB SOFTENER is a concentrated fabric softening liquid specially Formulated for use in commercial and on premise laundries. The product is suitable for application on most types of fabric and can be manually or auto dosed.

- SATFAB SOFTENER conc. is a concentrated fabric conditioner Based on biodegradable cationic, quaternary ammonium salts. In the wash solution, these positively charged cationic, adsorb to the negatively charged surface of fabrics.
- Once adsorbed on to fabric the cationic have a lubricating effect.
- During the drying process, this prevents interlocking of individual fibers and build up of static electricity (especially on synthetic fibres). In addition lubrication facilitates ironing/ calendaring.
- The product has also been formulated with perfume, which leaves a pleasant smell on fabric.

FORMULATION

DI Hydroxy Fatty Acid 10% - 12%

Calcium Chloride 0.2%

USAGE INSTRUCTION

- Dosing level is dependent on wash classification. The softener Should be applied in the last rinse of a washer extractor or in the last section of a continuous batch washer.
- Dosage recommendation:
1.5 - 5.0ml/kg of fabrics.

BENEFITS:

- Good softening of many types of fabric (towels, sheets, wool, delicate articles. etc).
- Prevents build-up of static electricity on synthetic fabrics.
- Delivers a pleasant residual smell.
- Is based on biodegradable raw materials.



SPECIFICATION:

| | |
|------------------|---------------------------|
| Appearance | : Slightly |
| white Liquid | |
| Specific Gravity | : 1.02 g/cm ³ |
| pH Value | : 6.83 (in 1% solution) |
| | : 5.79 (in 100% solution) |

SATFAB BUILD – Detergent Booster

SATFAB BUILD is a liquid alkali builder/ booster, based on a mixture Of alkalis and NTA (water hardness binder), for use in Medium to hard water (125 – 250 ppm).

- SATFAB BUILD is a powerful alkali builder/ booster, which is based on a balanced blend of alkali, water hardness sequestering agent and anti-greying agents.
- SATFAB BUILD is most commonly applied in conjunction with a surfactant booster. These products combined with bleach or a powerful system, which may be used for cleaning fabric from hospitals and other health care establishments.

FORMULATION

| | |
|-------------------------|-----|
| N | |
| Sodium Hydroxide | 20% |
| Non Anionic Surfactants | 5% |
| Phosphates | 5% |

USAGE INSTRUCTION

Dosing level is dependent on water hardness levels, nature and level of soil and type of fabric.

SOILLEVEL

Light
Medium
Heavy

DOSAGE (ml/kg Dry Goods)

8–12
15–20
25–40

BENEFITS:

- Improves soil removal, especially of food (protein) And fat stains e.g. restaurant and kitchen linen.
- Prevents greying of linen by stabilisation of soil particles in wash liquor.
- Improves wash performance by affecting the soil fibre interaction (swelling).

SPECIFICATION:

| | |
|------------------|--------------------------|
| Appearance | : Clear |
| Liquid | |
| Specific Gravity | : 1.23 g/cm ³ |
| pH Value | : 11.59 (in 1% solution) |
| | : 11.93 (Concentrate) |



SATFAB HYPO – Chlorine Bleach

SATFAB HYPO is a sodium hypochlorite based bleach suitable for use in all types of industrial laundry machines. SATFAB HYPO effectively removes staining on WHITE linen.

- SATFAB HYPO is designed for use through the Satol Chemicals automatic dispensing equipment and should never be manually dosed.
- Heavy concentrations should be used, it is recommended that an Anti Chlor such as SATFAB CID / SATFAB RUSTNIL be used to neutralise chlorine residual.

BENEFITS

- Effective in all water conditions.
- Longer shelf life and stability
- Restricts corrosion risk.
- Economical dosage control, long drum life
- Easy identification–assists staff training

USAGE INSTRUCTION

- Dosage: 3–15 ml per kilogram wash load depending on light to heavy stains. Maximum temperature 60°C. Dosage may vary according to degree of soiling.
- Caution: DO NOT use on colours or on hospital linen that has been contaminated with chlorhexidine-based disinfectants.

SPECIFICATION:

| | |
|------------------|-------------------------------------|
| Appearance | : Clear Liquid |
| Specific Gravity | : 1.09 ± 0.05 g/cm ³ |
| pH Value | : 11.71 ± 0.02 (in 1% solution) |
| | : 12.31 ± 0.02 (Concentrate) |



SATFAB OXY Bleach – Liquid Oxygen Bleach

SATFAB OXYBLEACH is high quality peroxide-based bleach for maintaining and enhancing whiteness and for removing stains coming from food stuffs and beverages.

- It is suitable for wide array of colored fabric too.
- This formulation has good storage stability.

USAGE INSTRUCTION

- 3-10 ml per kg of wash load depending upon intensity of stains.
- Wear protective gloves/ protective clothing/ eye protection/ face protection.
- Do not breathe mist, vapors or spray.
- Keep/Store away from clothing/ combustible materials

FORMULATION

Hydrogen Peroxide 25 - 35%
Phosphonate 0.5 - 1%

BENEFITS

- Safe on coloured linen.
- Can be used simultaneously in the main wash with detergent and booster.
- Economical dosage control.
- Long drum life for concentrated formulation.

SPECIFICATION

| | |
|------------------|-------------------------------------|
| Appearance | : Clear Liquid – |
| Colourless | |
| Odour | : Characteristic Odour |
| Specific Gravity | : 1.15 ± 0.05 g/cm ³ |
| Solubility | : 100% water soluble |
| pH Value | : 7.0 ± 0.5 (in 1% solution) |
| | : 1.5 ± 0.5 (Concentrate) |



